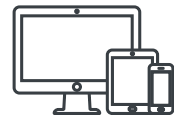




Real-time access to machine data

- Location
- Machine health
- Fuel & energy consumption
- Machine and engine alerts for 24/7 remote monitoring



Remote monitoring for better service levels

- Proactive, remote monitoring
- Advice from trained and certified professionals
- Anticipation of spare parts needed
- Error code notifications



Usage, service scheduling and maintenance data on my mobile app

*my* **GEHL**

- Your personal assistant
- Dedicated mobile application
- Customisable interface
- Quick access to your information



Customer relationship and business performance

- A brand that listens to your needs
- Support from experts at all times
- Data that is useful for working in complete safety and for improving the next generation of machines.

### ☛ Total control over your machine

Geolocation, geofencing, hours of use, etc. You are in charge of defining when and where your machine can be operated. If it is stolen or used without authorization, you are notified immediately.

- ⊕ Track and trace your machine!

### ☛ Your warranty extended to two years

By agreeing to share your machine data, you will enjoy better service and your manufacturer warranty will be extended to two years (or 2,000 hours).

- ⊕ Machines are covered for even longer!

### ☛ Anticipative maintenance

By accessing machine data, our technicians can anticipate routine maintenance operations and repairs with the needed parts, meaning issues are resolved quicker for win-win benefits.

- ⊕ Reduction of the total cost of ownership (TCO)

### ☛ Reduced downtime

By anticipating the maintenance operations that need to be performed, your machine is serviced at the most suitable time. The risk of unexpected breakdowns and downtime are substantially reduced.

- ⊕ Maximum productivity guaranteed!

### ☛ All your machine data

Location, alerts, fuel consumption, etc. By knowing your machine better, you can optimize how it is used and driven, improving financial and logistics management. Save time and enjoy a greater peace of mind!

- ⊕ Efficient service scheduling!

### ☛ A general overview

Monitoring of machine events enables you to implement corrective actions and optimize your driving while also helping you understand your total cost of ownership. If the machine is sold, you can pass on its "ID card" to the new owner as a gesture of transparency.

- ⊕ Higher return on investment!

### ☛ A relationship that goes beyond expectations

With the network of Gehl partners by your side, you can work in complete confidence and count on support and practical help at any moment.

- ⊕ A comprehensive organization at your service!

### ☛ Even more expert advice

With smart connected machines, the benefits of our advice are measurable: improved response times, reduced resolution times and increased rate of first time fixes.

- ⊕ The entire Gehl network is behind you!



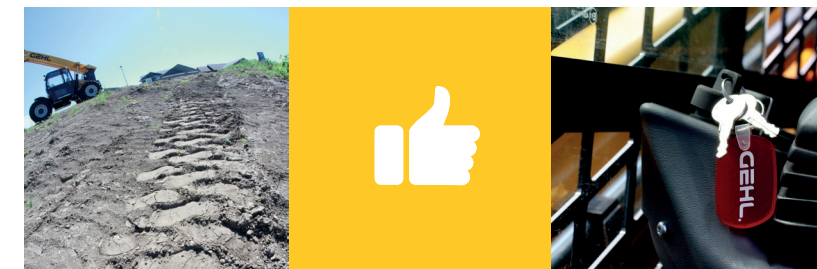
Better control



Greater management



« Your Gehl connected machine: the perfect partner for simplifying everyday life and improving performance! »



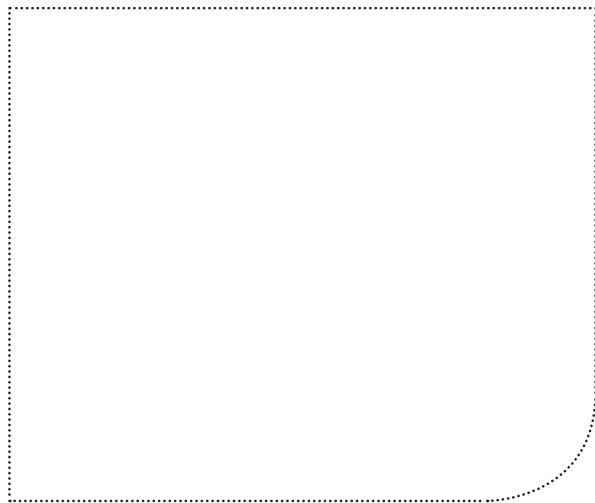
Higher performance





## HAVE A QUESTION? LOOKING FOR ADVICE?

Your dealer is here to help!



## GEHL CONNECTED MACHINE

### Your machine information at your fingertips!



myGEHL

### All your data and so much more!

Ergonomic, secure and easy to use, with myGEHL you have real-time access to all your machines technical information. At a glance, you can **view its fuel consumption, movements, operating times, key indicators, upcoming maintenance operations, your warranty, etc.** You can also **contact your local dealer to arrange an appointment**, seek advice or order spare parts.

Even simpler

myGEHL



### Your data is secure

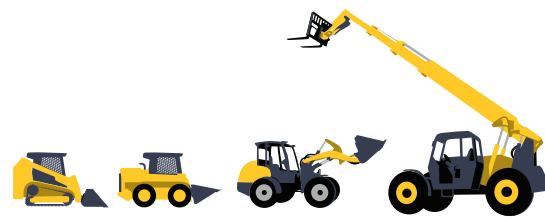
The data sent by your machine is collected on a **secure server, guaranteeing complete confidentiality.** Only designated expert technicians are authorized to **gather the data and analyze it** in order to ensure optimum monitoring. Your maintenance data is archived regularly in a virtual maintenance log.

**Your machine is in safe hands and so is your data!**

# GEHL®

# Connected Machine

With the Gehl Connected Machine, our entire organization is behind you to deliver the performance you need!



# GEHL®



*My Gehl has something extra!*

myGEHL